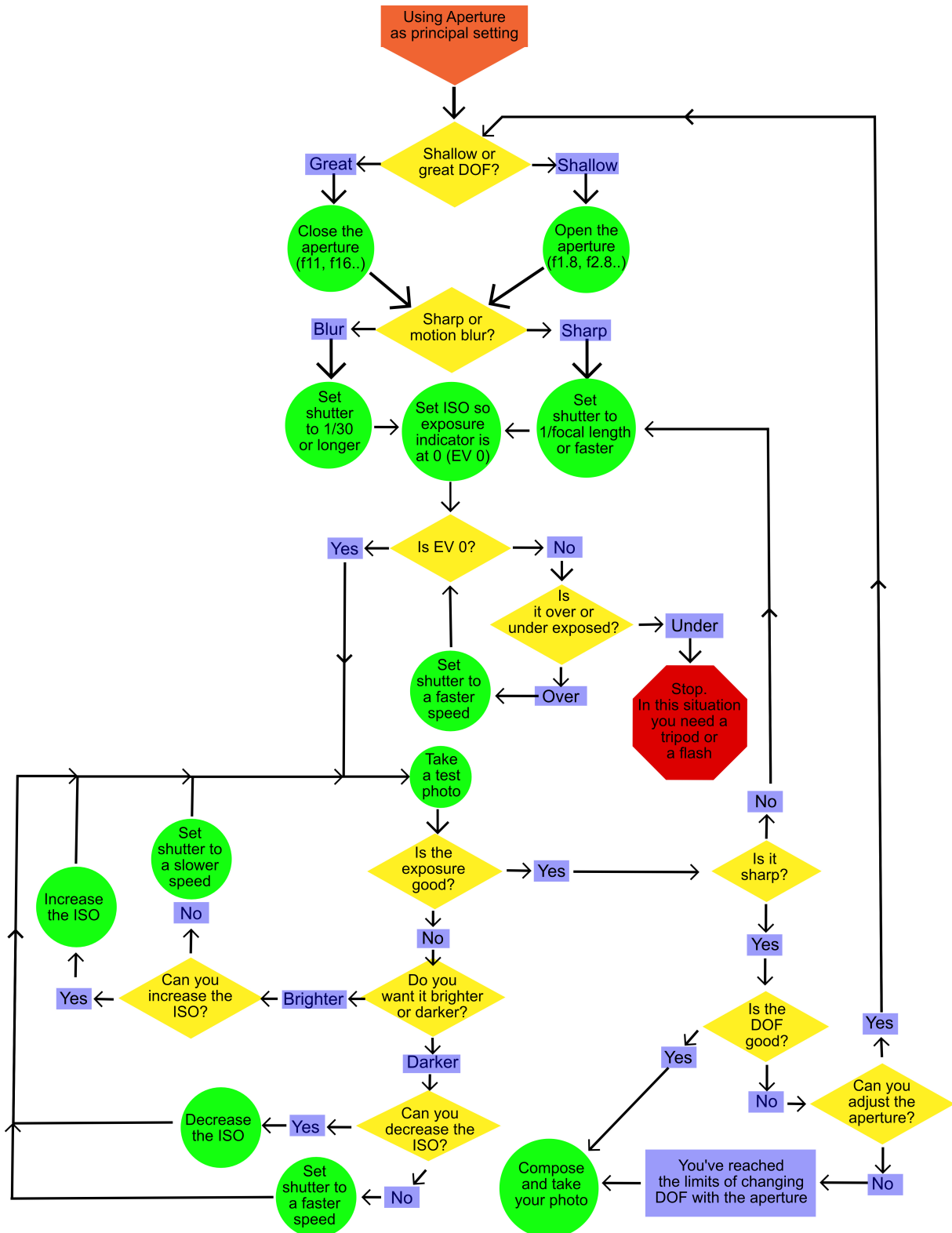


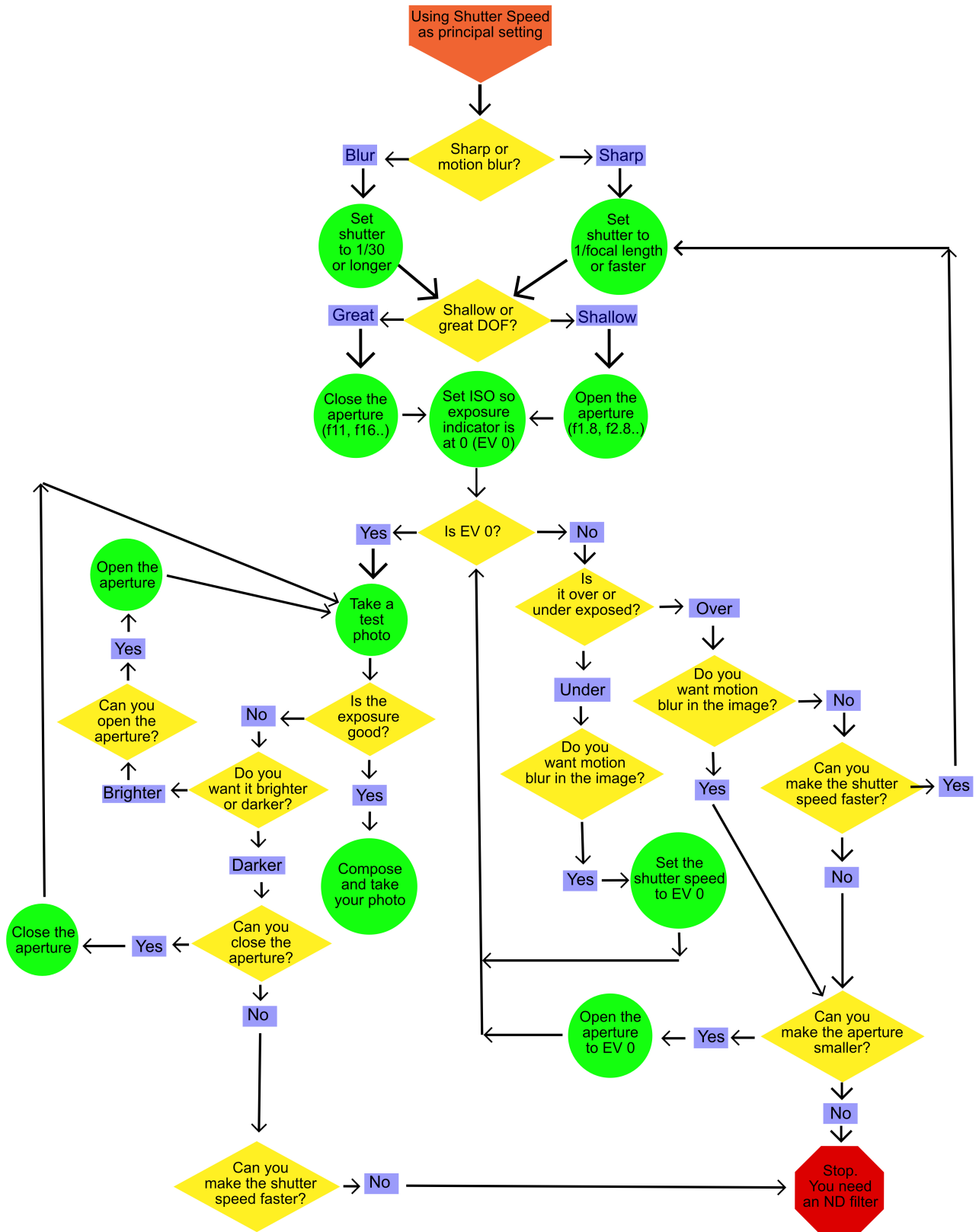
Manual Shooting Flowcharts



APERTURE FLOW



SHUTTER SPEED FLOW



Conclusion

I hope you've found these flowcharts useful! Choosing settings in manual mode is just the beginning of taking great photos, and if you'd like to learn more about how to use and take control of your camera so that you can reliably take photos that look exactly the way you want them to, check out my [Guide to Shooting in Manual Mode video course](#).

And then...

**GET OUT THERE
AND TAKE
SOME DAMN
PHOTOS!**